



GRANITE COMMERCIAL SOUTH, LLC

Retail Space Available Mocksville, NC

**GRANITE
COMMERCIAL
SOUTH, LLC**

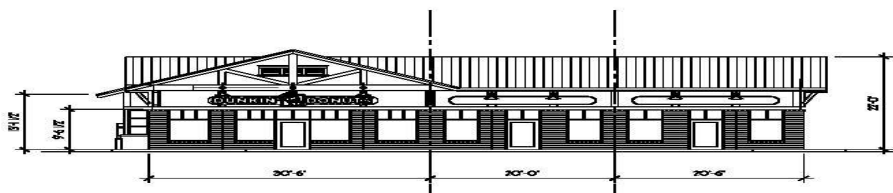
**Mocksville Shoppes
1440 Yadkinville Road
Mocksville, North Carolina**

Retail Space for Lease:

- Join Dunkin Donuts in prime retail space directly across from Lowes Home Improvement
- Perfect location for food, wireless and other retail and office uses
- Site located in high traffic retail corridor of Yadkinville Road in between McDonalds and Bojangles
- Located directly off I-40 in heavily traveled commuter corridor

Shannon Dixon
shannond@granitedev.com
Direct: (919) 268-4930
Cell: (919) 605-1234

Daniel Evans
daniele@granitedev.com
Direct: (919) 268-4928
Cell: (919) 819-7408



www.GraniteCommercialSouth.com





GRANITE COMMERCIAL SOUTH,

Mocksville, NC

AERIAL PHOTO
1440 Yadkinville Road



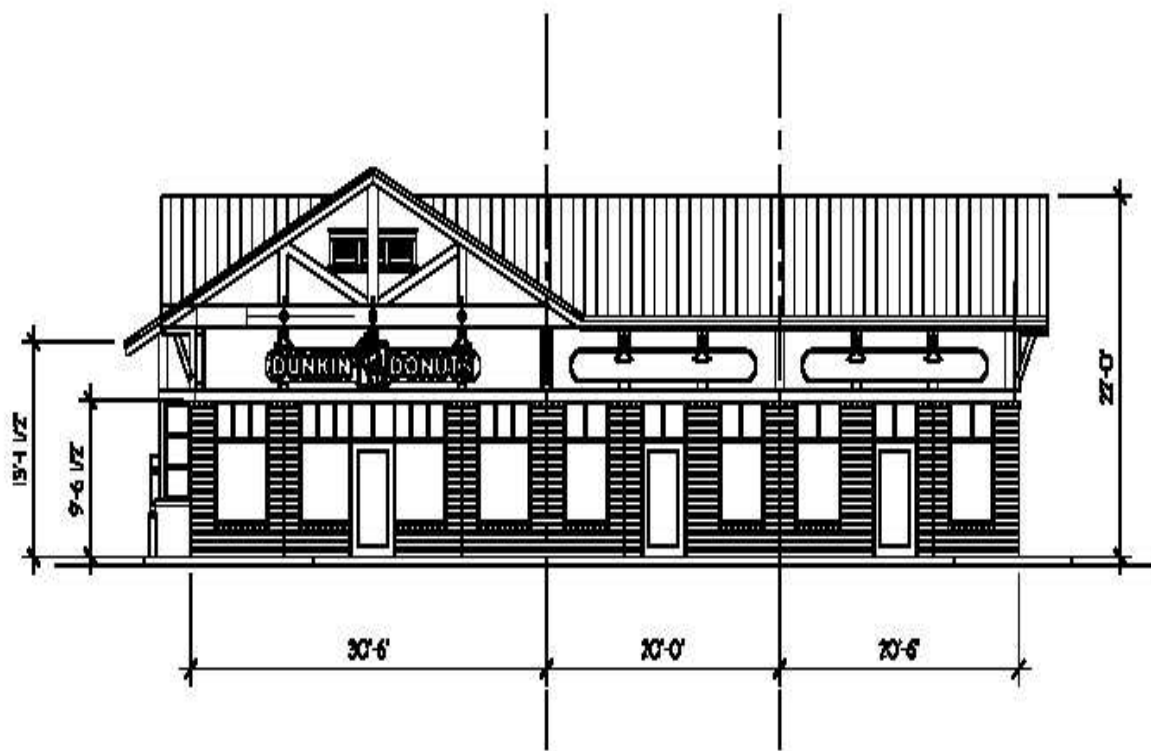
www.GraniteCommercialSouth.com





Mocksville, NC

Site Plan 1440 Yadkinville Road



www.GraniteCommercialSouth.com



